

## **ANNUAL REPORT 2022**

Megawide Corporate Foundation, Inc.

## **TABLE OF CONTENTS**

### **I. INTRODUCTION**

- a. Megawide Foundation History
- b. Megawide Foundation Vision, Mission, and Values
- c. Megawide Foundation Board of Trustees

### **II. SALIENT ACCOMPLISHMENTS**

#### **Social Initiatives**

#### **A. Megawide Engineering Excellence Scholarship (MEES) Program**

- MEES History
- MEES Activities
  - MeGabay: Megawide Scholars' Life and Technical Skills Training
  - Distribution of Mega Health Kit
  - Internship Program with Megawide Group
  - Distribution of Megawide Emergency Go Bags
  - Scholars' Project Site Tour
  - Scholars' Community Immersion Activity
  - Annual Home Visitation and Monitoring
  - Year-End Thanksgiving Program
  - Distribution of Christmas Baskets
  - Quarterly Scholars' Meeting and Get Together Activity
  - Mega Mentoring Program with Engineers and Architects
- MEES Benefits and Privileges

#### **B. Disaster Preparedness and Response**

- MegaTulong: Donation with DSWD Central Office
- MegaTulong: Super Typhoon Karding Response

#### **C. Other Initiatives**

- Megawide Legacy Employees' Appreciation Day
- Computer Set Distribution
- 2022 LCF Conference and Expo
- 10<sup>th</sup> Year Anniversary Celebration
- Para Kina Ate't at Kuya (Christmas Outreach Program)
- Partnership with Schools

#### **D. DIFFICULTIES/ PROBLEMS ENCOUNTERED AND SOLUTIONS**

#### **E. SIGNIFICANT CHANGES IN THE AGENCY**

- a. Organizational Structure and Manpower

#### **F. PLAN OF ACTION FOR THE SUCCEEDING YEARS**

## INTRODUCTION

Wins may well define the first decade of Megawide Foundation. There is a triumph in the admission of numerous promising scholars; a true sense of fulfillment in program that uplift the disadvantaged. Yet if one were to consider the larger picture, there is an idea which more accurately holds together the events of the past decade: transcendence.

The promise of Megawide Foundation has been to provide First World opportunities. We have kept of our word, honoring the countless individuals who have come to depend on our work. Faced with the challenge of a global health crisis, we held fast to the values that define us, remaining vital, and uplifting all who depend on us with usual effectivity.

The report below details actions taken to excel in the new normal. 2022 was a year of gradual return - to old customs, to meeting people face-to-face. It was also one that required adopting evolved methods of work. We believe we have made the most out of these conditions. After all, it is the prospect of thriving together, for the benefit of others, that lends these activities meaning.

In December 2017, Megawide Foundation received accreditation from the Philippine Council for NGO Certification (PCNC); it has since been renewed and will be recognized until 2022. The Foundation also obtained a three-year accreditation as a first-level social welfare and development agency from the Department of Social Welfare and Development (DSWD) in March 2019. Moreover, in 2022, Megawide Foundation's Certificate of Registration as a Social Welfare Development Agency was renewed by the Department of Social Welfare and Development for Region VII- Cebu Province and the National Capital Region.

Megawide Foundation is a member of the League of Corporate Foundations (LCF) and the Philippine Business for Social Progress (PBSP). The Foundation pursues collaborations with other nonprofits, social enterprises, and socio-civic organizations that share the company's vision and values to achieve a greater impact through its social programs. Megawide Foundation is also tasked to help strategic business units (SBU) and affiliates to conduct and implement corporate social responsibility (CSR) programs in their respective host communities to expand the impact of providing first-world opportunities to the marginalized Filipino communities.

Since its inception, Megawide Foundation has been actively involved in programs that are aligned with the Sustainable Development Goals (SDGs) of the United Nations, including Quality Education (SDG 4), Decent Work & Economic Growth (SDG 8), Sustainable Cities and Communities (SDG 11), and Responsible Consumption and Production (SDG 12). Megawide Foundation also leads and oversees Megawide's sustainability reporting initiative by the Global Reporting Initiative (GRI) Standards.

## **VISION**

*For marginalized Filipino communities to thrive through sustainable First-World opportunities.*

## **MISSION**

*To engineer a future where marginalized Filipino communities can thrive by empowering them through First-World opportunities, collaborating to harness their unique resources and skills; and building self-sustaining programs in education, livelihood, and environmental conversation.*

## **CORE VALUES**

*Collaboration*

*Empowerment*

*Sustainability*

*Integrity*

*Excellence*

*Innovation*

## **TAGLINE**

Megawide Foundation.  
*Engineering First-World Communities Together*

## **PEOPLE BEHIND MEGAWIDE FOUNDATION**

### **THE BOARD OF TRUSTEES**

**Mr. Manuel Louie B. Ferrer**

Chairman of the Board

**Mr. Edgar B. Saavedra**

Trustee and Vice Chairman

**Ms. Teresa Chua-Saavedra**

Trustee

**Mr. Celso P. Vivas**

Independent Trustee

**Ms. Paulette Deduque-Lui**

Independent Trustee

### **TECHNICAL WORKING GROUP**

**Ms. Maria Belinda Morales**

Chief Human Resource Officer

**Mr. Rolando Bondoy**

Assistant Vice President – Investor Relations

### **OFFICERS**

**Mr. Manuel Louie B. Ferrer**

President

**Atty. Charlotte King**

Corporate Secretary

**Atty. Christian Jason Daludado**

Assistant Corporate Secretary

**Mr. Christopher Nadayag**

Treasurer

**Ms. Teresa Chua-Saavedra**

Executive Director

# SALIENT ACCOMPLISHMENTS

## SOCIAL INITIATIVES

### A. Megawide Engineering Excellence Scholarship (MEES) Program

#### History

Megawide Engineering Excellence Program (MEES) is the Foundation's flagship program, which provides underprivileged Filipino youths access to high-quality engineering education through partnerships with different state universities in the Philippines. Since 2015, MEES has helped close to 100 scholars.

Megawide Foundation also provides holistic interventions to help beneficiaries reach their goals. In 2022, the Foundation opened a venue for scholars to enhance their social skills, and understand their role in the community. In the same year, Megawide Foundation produced a new batch of engineers, six (6) scholar-graduates passed the 2022 Licensure Examination for Civil Engineers and two (2) scholar-graduates passed the Electrical Engineer Licensure Examination. Furthermore, 16 scholars completed their undergraduate studies.



*Photo: The Scholar-Graduates for Academic Year 2021-2022*

#### MEES Activities

##### MeGabay

Megawide Scholars' Monthly Life and Technical Skills Training was launched in March 2022. The program expands scholars' capacities through valuable social and technical skills.

MeGabay also invites scholars to reflect on personal and external experiences, covering topics such as: (1) Journey in Embracing the Normal, (2) Heart Speaks [Mindfulness workshop], (3) PILI Pinas: Voter Education Training, (4) Sustainability in Engineering in the 21st Century, (5) Renewable Energy towards First-world communities, (6) MegaHanda: Tungo sa Ligat na Lipunan, (7) Sketching and Engineering a Future Career, (8) Recognizing Biases in Decision Making: How to overcome financial stress, and (9) Promoting the Culture of Malasakit within Me.



*Photo 1: Voters Education Training held last April with Mr. Jason Torres and Fiona Nicolas of Megawide Corporate Office*



*Photo 2: Sustainability Workshop held last May in Cebu Cityl with Ar. Joy Onozawa, Sustainability Consultant of Cebu2World Development, Inc and Cebu-based scholars.*



*Photo 3: Renewable Energy Talk held last June in via Zoom Conference with Citicore Power, Inc. Assistant Vice President for Corporate Affairs, Ma. Christina Cabalhin*



*Photo 4: MeGabay – Sketching and Engineering Future Career with invited guest speakers, Dr. Gilmore G. Solidum, Vice President, Pamantasan ng Lungsod ng Maynila and Fr. Manoling Francisco, Executive Director, Taniging Yaman Foundation, Inc.*





*Photo 5: MeGabay – Disaster Preparedness Workshop in partnership with Lifeline Kit Philippines, Inc.*



*Photo 6: MeGabay – Year-End Thanksgiving Party entitled: Promoting the Culture of Malasakit within Me together with the guest speaker, Dr. Margie Holmes, Professor V, Pamantasan ng Lungsod ng Maynila*

### **DISTRIBUTION OF MEGA HEALTH KIT**

The COVID-19 pandemic posed unprecedented challenges to our physical and mental health. Accordingly, there is a brighter spotlight on the importance of taking care of our health, not only to prevent the spread of the virus but to ensure that we have the resilience to face the challenges that come our way. With this in mind, the Megawide Foundation's distribution of essential health kits to its MEES scholars is a significant step towards building a healthy and resilient community.

The foundation recognizes that education is only one aspect of a person's development. A healthy mind and body are essential for an individual to reach their full potential. The distribution of essential health kits to the MEES scholars is a testament to the foundation's understanding of this fact.

Each kit contains essential health items such as face masks, alcohol, soap, vitamins, an oximeter, thermometer, and Strepsils. These items are crucial in maintaining good health and preventing the spread of diseases. The inclusion of an oximeter and thermometer is especially important in the context of the COVID-19 pandemic, where monitoring one's vitals is crucial in detecting early symptoms of the disease.

The distribution of these health kits is a significant step towards building a healthier and more resilient community. It shows that the Foundation recognizes the importance of taking care of one's health, especially in trying times. It also demonstrates the foundation's commitment to its scholars, not only in providing them with educational



opportunities but also in ensuring that they have the necessary tools to take care of themselves.



*Photo 7: Distribution of Mega Health Kit with Megawide Scholars*

### **INTERNSHIP OPPORTUNITIES WITH MEGAWIDE GROUP**

Honoring a commitment to students' futures, Megawide Foundation, in partnership with Megawide Construction and Parañaque Integrated Terminal Exchange (PITX), relaunched the internship program for its current Megawide Scholars. As the Foundation's goal is to provide first-world opportunities, this internship program allowed scholars to have a first-world experience while fulfilling their academic requirements.

A total of 10 Megawide scholars were able to complete their Internships in different project sites under the tutelage of supervisors.



*Photo 8: Megawide Scholars serves as Interns of Megawide Group held last July to August 2022.*

### **DISTRIBUTION OF DISASTER EMERGENCY GO BAGS**

It is always better to prevent than to cure. Disasters and calamities take people's lives, highlighting the need to develop emergency preparedness.

Responding a day after an earthquake was experienced in Metro Manila, Megawide Foundation partnered with Lifeline Kit Philippines and distributed an Emergency Go Bag to all of its scholars. The bag included a flashlight, extra batteries, a first aid kit, a multi-purpose tool, a 3-in-1 whistle, and a retractable water cup.

The Foundation believes that equipping people with the proper tools and mindset during emergencies is important in building resilient and empowered communities.



*Photo 9: Emergency Go Bags distributed last August 2022 in partnership with Lifeline Kit Philippines*

### **SCHOLARS' PROJECT SITE TOUR**

Megawide Foundation believes in the importance of bringing scholars closer to options that they can explore in the future. Moreover, Foundation aims to give scholars the opportunity to learn outside the classroom, and gain practical knowledge that can be applied in the workplace.

In this regard, Foundation restored the Project Site Tour in partnership with Megawide Construction and Citicore Power Inc. last August 19, 2022. 46 scholars from both Manila and Cebu witnessed the achievement of first-world technology in the Malolos-Clark Railway Project (MCRP), an elevated railway line to connect the northern provinces and the capital, Metro Manila and Arayat-Mexico Power Solar Farm, a joint venture between Citicore and ACEN, which addresses power demands for over 45,000 households.



*Photo 10: Scholars' Project Site Tour held at Malolos-Clark Railway Project (MCRP) and Arayat-Mexico Power Solar Farm last August 2022*

### **SCHOLARS' COMMUNITY IMMERSION ACTIVITY**

Aside from exposing them to their potential workplace, Foundation also launched a community immersion activity last November 2022 in partnership with the Manila Department of Social Welfare. The activity saw visit one of the oldest in-house facilities for abandoned, neglected individuals and families living in the streets of Manila. 40 scholars, together with the Pamantasan ng Lungsod ng Maynila (PLM) Social Work interns, implemented psycho-social and recreational activities such as puppet making, coloring and origami making, and bracelet making. The Megawide Foundation also



donated in-kind goods amounting to 150,000 pesos composed of hygiene kits, cleaning materials, activity area materials, and snacks for kids with special needs.

Cebu Technological University participated in a similar activity. Megawide Foundation partnered with Magwayen Scholars' Creative Guild, a student organization of Pamantasan ng Lungsod ng Maynila, and conducted an outreach program held last December 16, 2022, at Tanay, Rizal. The chosen beneficiary was Sitio Ibucao where the Mangyan tribe lives. A total of 50 students received school materials and a Christmas basket during the conduct of the event.



*Photo 11: Community Immersion held last November 2022 together with MBTC beneficiaries*

### **ANNUAL HOME VISITATION**

Megawide Foundation regularly visits Megawide Scholars and their family to personally check their overall well-being—honoring a commitment to disadvantaged communities

Last May 2022, Program Officers conducted home visitation in Cebu for the Cebu-based scholars, checking after their well-being and home lives. Also, from August to November 2022, together with the Social Work interns of Pamantasan ng Lungsod ng Maynila, the Foundation conducted home visitations for Megawide Scholars in Metro Manila, Cavite, Laguna, and Bulacan.

Home visitation is the Foundation's way of connecting with scholars and their families, and helping them better assess their needs to provide the necessary interventions.



*Photo 12: Home Visitation and kumustahan to the family of the scholars held from August to November 2022*

## **YEAR-END THANKSGIVING PROGRAM**

Megawide Foundation conducted the Year-End Thanksgiving Party through the MeGabay: Anniversay session held last December 14, 2022. The event celebrated the foundation's milestone, and recognized the hard work of the new board passers and the graduating batch of 2022.

The theme for this year's celebration was "10 years of engineering hope," which highlights the foundation's commitment to providing hope and support to aspiring engineers and construction professionals. The event was attended by the Foundation Board of Trustees, led by its Chairman and President, Mr. Louie Ferrer, as well as other members of the Megawide Group Community.

During the event, the Foundation recognized the new nine (9) board passers who passed the licensure exams for civil engineering, electrical engineering, and mechanical engineering. The Foundation also recognized the hard work and dedication of the graduating batch of 2022, who will soon be entering the workforce as engineers and construction professionals.



*Photo 13: Year-End Thanksgiving Program held last December 2022*

## **DISTRIBUTION OF CHRISTMAS BASKETS**

As part of the tradition, 47 scholars together with the scholar-graduates and board passers, Megawide Foundation distributed Christmas Baskets during the Year-End Thanksgiving Program. Aside from expressing appreciation and hope, the Christmas baskets also contained the same items for both employees and scholars, which represents equal opportunities for everyone in the company. Ka-Megawide represents family, and in a family, nobody gets left behind.



*Photo 14: Distribution of Christmas Baskets for Megawide Scholars held last December 2022.*



### **SCHOLARS' SOCIAL GROUP WORK ACTIVITY**

As part of the result of the annual home visitation held last August to November 2022, Megawide Foundation with the help of PLM Social Work interns launched new activity for its scholars: The Social Group Work Activity. This aims to resolve the arising issues about time management and interpersonal communication.

The learning-through-sharing activity, which is part of the Foundation's MEES Program, targets to address the common challenges that these groups of students face today. Thirty-five (35) Megawide Scholars were able to accomplish this session held from December 15-17, 2022 at San Diego Gardens, Intramuros, Manila.



*Photo 15: Scholars' Social Group Work Activity held last December 2022 at Intramuros, Manila.*

### **QUARTERLY SCHOLARS' MEETINGS AND GET-TOGETHER ACTIVITY**

The Foundation through its Program Officers conducts an activity quarterly per partner institution to have face-to-face *kumustahan* activity to celebrate the small victories and achievements of each scholar, and to provide a free space where they can express their thoughts and emotions freely without any judgments from their co-scholars.



*Photo 16: Meeting with PLM and TUP Scholars*

### **MEGA MENTORING PROGRAM WITH ENGINEERS AND ARCHITECTS**

The Megawide Foundation in partnership with Megawide Construction has launched an innovative mentoring and coaching program aimed at providing its scholars with the necessary skills and knowledge to succeed in their academic and professional pursuits. The Mega Mentoring and Coaching Program is an initiative that assigns senior engineers and architects from Megawide Construction to mentor the Megawide Scholars for Academic Year 2022-2023.

The program is designed to provide the scholars with practical and hands-on experience in the field of engineering and construction. Through the program, the

scholars will be exposed to advanced technology such as STAAD Pro software and COSH training, which are essential tools for any aspiring engineer or architect. This exposure will develop a greater understanding of the technical aspects of their field, develop their critical thinking skills and enhance their problem-solving abilities.

The Mega Mentoring and Coaching Program demonstrates Megawide Foundation's commitment to its scholars' holistic development. The program recognizes that education is not just about acquiring theoretical knowledge, but also developing practical skills and competencies that are essential for success in the professional world. By providing its scholars with access to industry professionals and advanced technology, the foundation is giving them a competitive edge in the job market.

The program is an excellent opportunity for scholars to learn from experienced professionals who have years of experience in the field. The mentors will be able to share their knowledge, expertise, and insights with the scholars, providing them with valuable guidance and advice that will help them in their academic and professional pursuits.



*Photo 17: Mentoring Session with Scholars and Site Engineers*

## **SCHOLARSHIP BENEFITS AND PRIVILEGES**

At the core of MEES are the financial benefits and privileges that Megawide scholars regularly enjoy, subject to their academic and program standing. The following forms of support are provided to all MEES active scholars and scholar-graduates:

- Monthly Stipend
- Internet Connectivity Allowance
- Book Support
- Thesis Support
- Graduation Support
- Board Review Support
- Dorm Support
- Miscellaneous Support
- Benevolence/ Emergency Support

## **B. Disaster Preparedness and Response**

Megawide Foundation is set to engineer resilient communities alongside its vision to engineer a first-world community. The Foundation continues its advocacy in emergency and disaster preparedness through MegaHanda by conducting training



with its beneficiaries. The foundation is also proactive in responding MegaTulong to areas affected by disasters through strategic partnerships which enabled fast and effective delivery of services to the communities in need.

## **MegaTulong**

### **RESPONSE TO EARTHQUAKE-AFFECTED COMMUNITIES IN THE NORTHERN LUZON REGION**

Megawide Foundation was able to extend help to earthquake-affected communities in Northern Luzon last August 11, 2022. Over fifty (50) sacks of rice which benefitted 416 families were extended through our partnership with the Department of Social Welfare and Development - National Resource and Logistics Management Bureau (DSWD – NRLMB).



*Photo 17: Turn-over of donation to Department of Social Welfare and Development (DSWD) Logistic Facility*

### **RESPONSE TO SUPER TYPHOON KARDING AFFECTED COMMUNITIES**

Megawide Foundation conducted Disaster Relief Operation last October 7, 2022, affected communities in Mexico, Pampanga by Super Typhoon Karding occurrence last September 25, 2022. It is also one of the host communities of Megawide's Malolos-Clark Railway Project (MCRP) and Citicore's Arayat-Mexico Solar Farm.

The foundation was able to extend help to 6 Barangays, specifically, Brgy. Parian, Brgy. Sto. Cristo, Brgy. Lagundi, Brgy. San Jose Matulid, Brgy. Sto. Domingo, and Brgy. Anao, benefitting 300 affected families. The Disaster Relief Operation was in partnership with Citicore Foundation, Mexico Local Government Unit, and Mexico Municipal Social Welfare and Development Office.



*Photo 18: Distribution of Relief Packs to the affected communities of Super Typhoon Karding*

## **CALL FOR DONATION CAMPAIGN**

Supporting the initiatives to provide a prompt response to communities in need and affected by disasters, the Foundation launched a campaign under MegaTulong to call for donations and mobilize resources. The campaign was conducted from September 27 to October 7, 2023. The Department of Social Welfare and Development issued a permit for the legal conduct of resource mobilization.



*Photo 19: Certification from DSWD authorizing Megawide to conduct fund campaign*

### **C. Other Initiatives**

#### **MEGAWIDE LEGACY EMPLOYEES APPRECIATION DAY**

Last September 17, 2022, Megawide Chairman and CEO, Edgar Saavedra celebrated his birthday together with employees of Megawide who worked for over 12 years and above. This celebration was held at Megawide Batching Plant in Taytay, Rizal, and attended by more than 100 rank-and-file employees across different businesses of Megawide.

The Megawide Foundation team together with PLM Social Work and Communication interns facilitated the fellowship and kumustahan with the Chairman and her wife, Teresa Saavedra. The group reflected on Megawide's milestones, as well as the company's accomplishments across 25 years. As a sign of appreciation, Megawide Foundation distributed food, prizes, and gifts to the attendees.



*Photo 20: Megawide Founder, Ed Saavedra delivering his message to the Legacy Employees*

### **COMPUTER SET DISTRIBUTION**

Still, in celebration of Mr. Saavedra's birthday, Megawide Foundation distributed a set of computers to the rank-and-file employees of Megawide Group who have served for 12 years and above in the company—a token recognizing their efforts and contribution to the success of Megawide. A total of 112 computer sets were personally distributed by Mr. and Mrs. Saavedra together with Foundation Team held at Megawide Batching Plant, Taytay, Rizal.



*Photo 21: Megawide Founder, Ed Saavedra distributed computer sets to the Legacy Employees during his birthday celebration*

### **SUPPORTING THE IBO ROBOTICS TEAM**

For the Ibo Robotics Team, perseverance and passion drive them toward their ambitions. Headed by Ms. Mary Glare Arong, Master Teacher I, these kids are the pride and glory of Ibo Elementary School in its robotics program competing several times in the region and abroad.

Ibo Elementary School is one of the adopted communities of GMR Megawide Cebu Airport Corp. (GMCAC) which provides support and development programs that nurture the needs and wellness of its people. GMACAC has partnered with Megawide Foundation to find a common ground in achieving a holistic approach in advocating its mission of producing individuals that are equipped with formative education in innovative and sustainable communities.

Their robotics journey started when the Lapu-Lapu city government distributed robotic kits for entire educational institutions under the Department of Education local unit. This program aimed to equip students to be competitive in terms of technological innovation. With this initiative, these kids are given the opportunity to explore and learn high-tech advancements through programming and building a robot designed for several purposes.

From 2018 to 2022, they represented the country in the International Robotics Competition and bagged several awards and recognitions. The process was strenuous but fulfilling—from introducing the robotic program as part of their extra-curriculum, to training and developing the skills and talents of students, and eventually leading them to success by joining tournaments that challenge their creativity and analytical skills.

Through their partnership, GMACAC and Megawide Foundation have built a two-story building with four classrooms to provide more opportunities for children to gain better knowledge and experience learning.





*Photo 22: IBO Robotics team during their practice with their coach.*

## **THE 2022 LCF CONFERENCE AND EXPO**

Megawide Foundation supported the 2022 CSR Conference and Expo of the League of Corporate Foundations (LCF). The event was held with the theme "Creating the Future we Need: Striking a Path during a Period of Transition" and aimed to gather corporate social responsibility leaders and practitioners to discuss and exchange ideas on how to address the challenges brought about by the ongoing transition to a more sustainable future.

The LCF is a network of corporate foundations and corporations that engage in social development and corporate social responsibility initiatives. It aims to promote collaboration and best practices among its members in addressing social issues and contributing to sustainable development.

The 2022 CSR Conference and Expo were held last July 4-7, 2022, and was conducted hybrid due to the ongoing COVID-19 pandemic. The event featured various keynote speakers and panel discussions focused on the theme of creating a sustainable future. It also provided a platform for different organizations to showcase their CSR initiatives and projects.

Through its participation in the 2022 CSR Conference and Expo, Megawide Foundation hopes to contribute to the ongoing dialogue on sustainable development and corporate social responsibility. The event provided an opportunity for the foundation to learn from other organizations and share its own experiences and best practices.



*Photo 23: Together with Dir. Paulette D. Liu, Independent Trustee of Megawide Foundation during the culminating activity of 2022 CSR Expo and Conference*

## **MEGAWIDE FOUNDATION 10<sup>TH</sup> ANNIVERSARY**

Megawide Foundation celebrated its 10th anniversary by recognizing the contribution of its stakeholders in achieving its goal of "Engineering Hope" for the lives of each beneficiary. The event was graced by Ms. KOLEEN Davila-Palaganas, the Vice President for Sustainability of SM Investment, represented by Ms. Nova Concepcion. Ms. Concepcion highlighted the importance of promoting the culture of malasakit and sustainability and collective efforts in achieving the goal of community empowerment.

Megawide Foundation was established in 2011 as the corporate social responsibility arm of Megawide Construction Corporation, one of the leading engineering and infrastructure companies in the country. The foundation has been committed to helping communities and individuals in need through various sustainable projects and initiatives that focus on education, health, livelihood, and disaster response.

Over the past decade, Megawide Foundation has implemented various programs that have positively impacted the lives of many Filipinos. These programs include the construction of school buildings, the provision of scholarships, and the provision of medical assistance to marginalized communities. The foundation has also been instrumental in providing emergency response and relief efforts during natural disasters such as typhoons and earthquakes.

During the anniversary celebration, Megawide Foundation recognized the significant contributions of its stakeholders in achieving its goals. These stakeholders include partner organizations, donors, volunteers, and the communities themselves. The foundation believes that its collective efforts have made a significant impact on the lives of the beneficiaries.

Megawide Foundation's commitment to community empowerment has been unwavering for the past ten years. Their efforts have brought hope and positive change to many Filipinos, and they plan to continue doing so for many years to come. Their anniversary celebration was not only a testament to their achievements but also a reminder of their responsibility to continue their mission of "Engineering Hope" for the betterment of the communities they serve.



*Photo 24: Together with the attendees of Megawide Foundation's 10<sup>th</sup> year Anniversary*

### **PARA KINA ATE'T KUYA (AN ANNUAL THANKSGIVING PARTY)**

Our goals would not be attained without the vital contribution of our staff. Honoring them, Megawide Foundation held its annual thanksgiving party – “*Para Kina Ate’t Kuya*” on December 22, 2022, at Santolan Town Plaza. The event was made special by the presence of Megawide Foundation’s Executive Director, Ms. Teresa Saavedra, and was filled with fun games, raffle prizes, and gift certificates for everyone.



*Photo 24: Megawide’s Staff having games and activities with Megawide Foundation*

### **PSEFI-SKILLS PARTNERSHIP**

Megawide Foundation has partnered with Primary Structures Educational Foundation – School of Knowledge for Industrial Labor, Leadership and Service (PSEFI-SKILLS) to help in implementing the MEES program which is currently enrolled and lives in Cebu Province. Whereas, last October 17, 2022, Foundation Chairman Louie Ferrer and SKILLS President Paulette D. Lui signed a memorandum of understanding to seal its partnership for this endeavor.

This partnership with SKILLS further strengthens Megawide Foundation’s ability to make a meaningful impact in the education sector. By working together, the two organizations can leverage their respective strengths and expertise to provide better learning opportunities for Filipino students.

Aside from conducting the case management of the MEES program, SKILLS will also provide technical expertise such as skills training and different exposure for the Megawide Cebu-based Scholars.



*Photo 25: Signing of Memorandum of Understanding with the President and Executive Director of Primary Structures Educational Foundation, Inc.*



## **PARTNERSHIP WITH ACADEMIC INSTITUTIONS FOR INTERNSHIP PROGRAMS AND EXPOSURE**

Megawide Foundation has a long-standing commitment to supporting education and providing opportunities for students to gain practical experience in their chosen fields. By opening its doors for OJT placements, the Foundation gives students the chance to apply their theoretical knowledge in a real-world setting and develop their skills and competencies.

In 2022, the Foundation was able to seal a partnership with the University of Sto. Tomas and Pamantasan ng Lungsod ng Maynila - College of Humanities, Arts and Social Sciences and School of Social Work for the implementation of the Internship Program for BA Communication and Social Work students from July to December. This exposes them to the different activities and programs of Megawide and Megawide Foundation.

The OJT program is designed to provide a comprehensive learning experience for students. Participants are given the chance to work with experienced professionals and learn from their expertise. They are also exposed to various program management techniques, materials, and equipment, allowing them to develop a deeper understanding of the work of a corporate foundation.

The foundation believes that education is a key driver of social and economic development, and it is committed to supporting initiatives that help improve access to quality education for all.



*Photo 26: Executive Director Tata Saavedra attended the culminating Activity in Pamantasan ng Lungsod ng Maynila held last December 2022.*

## **STRATEGIC PARTNERSHIP**

ORGANIZATION	PROGRAM/ PROJECT	YEAR STARTED
Academic Institution		
Technological University of the Philippines - Manila	Megawide Engineering Excellence Scholarship (MEES) Program	2015
Polytechnic University of the Philippines - Manila		2016
Pamantasan ng Lungsod ng Maynila		2017
University of the Philippines – Diliman		2018
Cebu Technological University		2019
Non-Government Organization		

Primary Structures Educational Foundation, Inc. – School of Knowledge for Industrial Labor, Leadership and Service (PSEFI-SKILLS)	Megawide Engineering Excellence Scholarship (MEES) Program	2022
<b>Membership/Affiliations</b>		
League of Corporate Foundations (LCF) Inc.	Membership	2016
Philippine Business for Social Progress (PBSP)	Membership	2018
<b>Employee Membership Affiliations</b>		
Philippine Association of Social Workers, Inc.	Membership	2022

### **EMPLOYEE TRAINING AND SEMINARS ATTENDED**

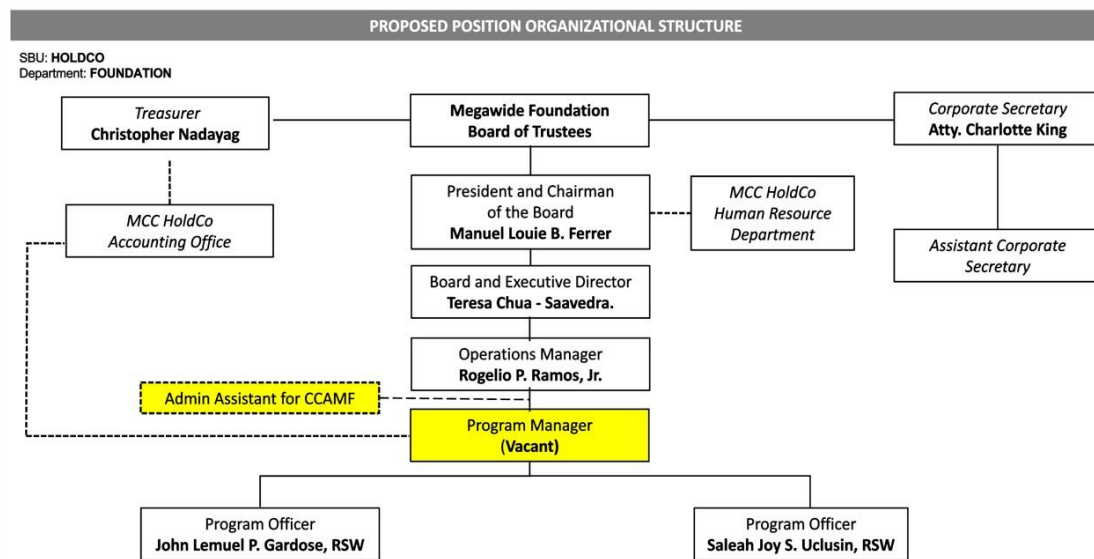
<b>TITLE OF THE TRAINING</b>	<b>ORGANIZED BY</b>	<b>LEVEL</b>	<b>DATE IMPLEMENTED</b>	<b># OF HOURS</b>
2022 National Convention for Social Workers – Social Work: Towards Ensuring the Functionality and Sustainability of Social Development Program and Institution at the Local Level	Philippine Association of Social Workers, Inc.	National Level	Oct. 18-21, 2022	40 hours
2022 CSR Conference and Expo: Creating the Future We Need: Striking a Path During a Period of Transition	League of Corporate Foundations, Inc.	National Level	July 4-7, 2022	40 hours
Seminar on Branding and Marketing	DSWD ABSNet Central Cluster	Local Level	June 16, 2022	4 hours
Orientation on the new guidelines of Registration,	DSWD ABSNet Central Cluster	Local Level	April 21, 2022	4 hours

Licensing, and Accreditation in pursuance of DSWD Memorandum Circular 17 series of 2018				
---	--	--	--	--

## DIFFICULTIES/ PROBLEMS ENCOUNTERED AND SOLUTIONS

### SIGNIFICANT CHANGES IN THE AGENCY

#### A. ORGANIZATIONAL STRUCTURE AND MANPOWER



Last October 25, 2022, the Megawide Foundation Board of Trustees approved the new table organization and the creation of a new key position of the Foundation that will lead the organization. The Executive Director will be responsible for monitoring the daily operations of the foundation, implementing its strategic direction and programs, and working closely with the Operations Manager and Program Officers.

The creation of the Executive Director role is a clear indication of the Foundation's commitment to strengthening its operations and ensuring that its programs are effectively implemented. With the Executive Director in place, the Foundation will be better equipped to monitor and evaluate its programs, identify areas for improvement, and make necessary adjustments to ensure that its goals are met.

In creating the new table of organization, the Megawide Foundation Board of Trustees has demonstrated its commitment to excellence and desire to continue making a meaningful difference in the lives of people in the Philippines. This move will help to ensure that it remains a driving force for positive change in the years to come.

## **B. PROGRAM DEVELOPMENT**

As Megawide Foundation aims to empower each Business Unit of Megawide Group to conduct and implement their programs, activities, and projects in their host communities, CSR Management Policy has been established that will serve as a guide in each business unit on how to create and formulate programs and introducing the new role of Foundation – (1) Policy Making and Guidance, (2), Conduct Training and Workshop and (3) Monitoring and Reporting.

Aside from these roles of Megawide Foundation in CSR implementation, the Megawide Engineering Excellence Scholarship (MEES) program remained the Foundation's flagship program under its Social Initiative program Pillar and supported the preparation and creation of Megawide's Group-wide Annual Sustainability Report a major initiative for the Foundation together with the Sustainability Steering Committee.

### **PLAN OF ACTION FOR SUCCEEDING YEARS**

Megawide Foundation stays focused on its vision to engineer First-World Communities by providing sustainable solutions and opportunities. This is in view, the Foundation's plan of action for the succeeding years includes, but is not limited to, the following:

- **Strengthening the Megawide CSR Working Committee**  
Initiatives to ensure the active participation of SBUs in heading their own CSR projects in host communities in accordance with Megawide's CSR framework by involving them regularly in the Foundation Board of Trustees Quarterly Meetings and other Ad-hoc events conducted by the Foundation.
- **Capacity Building for CSR Champions**  
Training and workshops that will increase the understanding of the SBUs impact and value of the company's social and environmental performance in implementing the Covenant of Shared Prosperity.
- **Growing the Foundation's Portfolio of Partners**  
Collaboration with other international and local NGOs to expand the area coverage and/or improve the implementation of existing foundation projects.
- **Establishment of new Policies and Guidelines**  
Improvement in the Foundation's processes by exploring and introducing new technology and innovations in the program and administrative management.